



View of Arthermo Production Plant and Offices in Gessate (Milano)

**ARTHERMO<sup>®</sup>**

# General Catalogue

2017/1

Temperature under control

## The Company

Arthermo has been making Measurement Instruments internationally for over 40 years. All of our products are manufactured with customary Italian style and quality.

We therefore have a wealth of experience and know-how which allows us to better tailor our products to the manufacturer's own specific needs. Service and Quality are the backbone of all our business relationships, which we are proud to have established over the decades.

Arthermo products cover many fields of application including the following:

- Refrigeration
- Washing
- Cooking
- Heating
- Floor heating

Arthermo production boasts high and consistent quality standards, thanks to advanced automation processes.

## TEAMWORKING

The team Arthermo works together, and everyone contributes to the company's success.

Training is on-going to ensure we stay up-to-date with the latest technical and commercial information.

Thanks to this approach we are able to comprehend their very real expectations. Brain-storming together is considered a fundamental part of our personal and professional growth.

## SUPPLY CHAIN

Optimum customer service is achieved by securing reliable partners. Arthermo performs well in changing markets thanks to its global vision. Our core values include loyalty, trust and honesty and these values are shared by all our partners, making Arthermo a truly international company. The market is king, for securing fundamental informations.

## ENGINEERING AND PRODUCTION

The customers' needs are the starting point of our solutions. We take great care with the design and durability of our products.

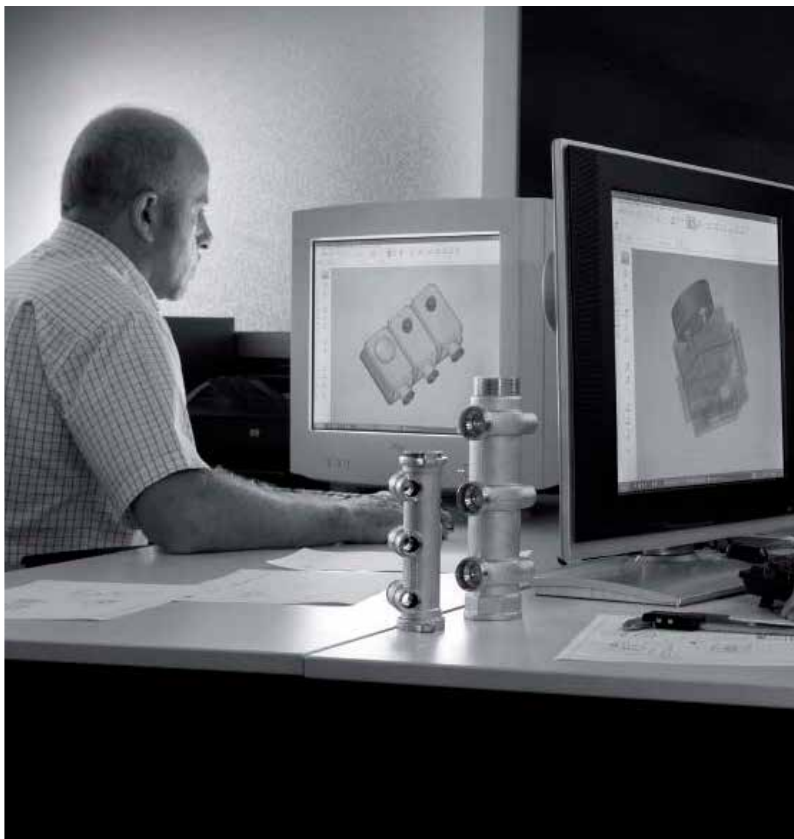
We look for the best raw materials to guarantee the highest quality product. TOP QUALITY is a MUST in our design and production processes. The brand Arthermo is built on quality control and testing: every product is checked 100% to ensure it is of the very highest quality. Our analogical range has a low impact on the environment: low consumption and long duration. Every new component is easily recyclable with a low environmental impact.

## ARTHERMO IN THE WORLD

Partnership throughout the history of Arthermo has created a global distribution network which guarantees an outstanding presence in the market. Thanks to this global network, Arthermo is a truly international company, and one which values different cultural approaches in order to satisfy the market's different needs and expectations.



The Bourdon spring: the heart of our thermometers



# Index

Capillary Thermometers	Section 1	4
Oven Range	Section 2	9
Bimetallic Thermometers	Section 3	13
Thermostats	Section 4	21
Digital Instruments	Section 5	29
Heating and Sanitary	Section 6	32



www.imq.it

**CERTIFICATO N. 9115.ART3**  
**CERTIFICATE N. 9115.ART3**

SI CERTIFICA CHE IL SISTEMA QUALITÀ DI  
WE HEREBY CERTIFY THAT THE QUALITY SYSTEM OPERATED BY

**ARTHERMO SRL**  
VIA ITALIA 32 - 20060 GESSATE (MI)

UNITÀ OPERATIVE  
OPERATIVE UNITS  
VIA ITALIA 32 - 20060 GESSATE (MI)

È CONFORME ALLA NORMA  
IS IN COMPLIANCE WITH THE STANDARD

**ISO 9001:2008**

PER LE SEGUENTI ATTIVITÀ  
FOR THE FOLLOWING ACTIVITIES

Progettazione e produzione di termometri bimetallici e a capillare a bulbo  
per uso industriale; commercializzazione di valvole, resistenze,  
termocamerali e manometri per il settore termosanitario.  
Design and production of bimetal thermometers of bulb and flexible capillary  
for industrial use; trading of valves, heaters, thermometers and  
pressure gauges for the thermosanitary sector

Referirsi al manuale delle qualità per l'applicabilità dei requisiti della norma ISO 9001:2008  
Refer to quality manual for details of applications to ISO 9001:2008 requirements

IL PRESENTE CERTIFICATO È SOGGETTO AL RISPECTO DEL  
REGOLAMENTO PER LA CERTIFICAZIONE DEI SISTEMI DI GESTIONE  
THIS USE AND THE VALIDITY OF THE CERTIFICATE SHALL SATISFY THE  
REQUIREMENTS OF THE RULES FOR CERTIFICATION OF MANAGEMENT SYSTEMS

DATA	PRIMA CERTIFICAZIONE FIRST CERTIFICATION	ESPIRAZIONE CORRENTE CURRENT ISSUE	SCADENZA EXPIRES
	1996-03-15	2015-12-23	2018-12-29



IMQ S.p.A. - VIA ORSIBELLIANO 43 - 20138 MILANO ITALY

CSQ is a member of



www.iqnet-certification.com

IMQ, the manufacturer of the world's first  
class certificate holder, is the largest  
provider of management systems  
certification in the world.  
IMQ is a subsidiary of IMQ Group AG  
and is located at IMQ Center  
at the IMQ site.



IAF 18, 29





THE INTERNATIONAL CERTIFICATION NETWORK

## CERTIFICATE

IQNet, and its partner  
**CISQ/IMQ-CSQ**  
hereby certify that the organization

**ARTHERMO SRL**  
VIA ITALIA 32 - 20060 GESSATE (MI)

for the following field of activities

*Design and production of bimetal thermometers at bulb and flexible capillary  
for industrial use; trading of valves, heaters, thermometers and  
pressure gauges for the thermosanitary sector*

Refer to quality manual for details of applications to ISO 9001:2008 requirements  
has implemented and maintains a  
**Quality Management System**  
which fulfills the requirements of the following standard

**ISO 9001:2008**

Issued on 2015 - 12 - 23      Expiry date: 2018 - 12 - 29

Registration Number:      **IT - 30424**

The status of validity of the certificate can be verified at <http://www.cisq.com> or by [www.it@tediso@cisq.com](mailto:www.it@tediso@cisq.com)



  
Michael Drechsel  
President of IQNET



  
Ing. Claudio Provent  
President of CISQ

IQNet Partners\*  
AENOR Spain, AFNOR Certification France, ADI-Turkey International, Belgium, ANCCER Portugal, CCC Cyprus  
CISQ Italy, CQC China, CQM China, CQS Czech Republic, CRO-Cert Croatia, DQS Holding GmbH Germany  
FCAV Brazil, FONDOMORMA Venezuela, ICONTEC Colombia, INOC Mexico, Intertek Certification Eurland, INTECO Costa Rica  
IRAM Argentina, JQA Japan, KPQ Korea, MIRTEC Greece, MSZT Hungary, Nonko AS Norway, NSAI Ireland, PCBC Poland  
Quality Austria, RQI Russia, SIGE Mexico, SII Israel, SIQ Slovenia, SIRIM QAS International Malaysia  
SQS Switzerland, SRAC Romania, TEST St Petersburg Russia, TSE Turkey, YUQS Serbia  
IQNet is represented in the USA by AFNOR Certification, CISQ, FQS Holding GmbH and NSAI Inc.

\* The list of IQNet partners is valid at the date of issue of this certificate. Updated information is available under [www.iqnet-certification.com](http://www.iqnet-certification.com)

ARTHERMO®

# Capillary Thermometers

Section 1

## Capillary Thermometers

APPLICATIONS:

Boilers, refrigerators, restaurants service equipment and electrical appliances.

CHARACTERISTICS:

ABS or metal case, fixing with brackets or clips, standard capillary length: 1500 MM, thermometric movement with liquid expansion.

**Capillary lengths available on request from 300 mm up to 12.000 mm**

### RO 88

Horizontal version, available also vertical.

Case 58x25x55 mm

MODEL	CODE	TEMPERATURE RANGE	BOX	BOX DIMENSIONS (mm)	WEIGHT (kg)
ROF 88 Black	883033340102	-40/+40° C	100	480x290x230	7
ROF 88 Black <sup>1</sup>	883033342602	-40/+40° C	100	480x290x230	7
ROF 88 White	883233340102	-40/+40° C	100	480x290x230	7
ROF 88 White <sup>1</sup>	883233342602	-40/+40° C	100	480x290x230	7
RO 88 Black	732033320102	0/120° C	100	480x290x230	7
RO 88 C Black	734035668002	50/350° C	100	480x290x230	7



### RO 2000

Horizontal version, available also vertical.

Case 58x25x45 mm

MODEL	CODE	TEMPERATURE RANGE	BOX	BOX DIMENSIONS (mm)	WEIGHT (kg)
ROF 2000 Black	960133340102	-40/+40° C	100	480x290x230	7
ROF 2000 White	960333340102	-40/+40° C	100	480x290x230	7
RO 2000 Black	740133363302	20/120° C	100	480x290x230	7
RO 2000 C Black	740135668002	50/350° C	100	480x290x230	7



### RN

Horizontal version, available also vertical.

Case 62x11x59 mm

MODEL	CODE	TEMPERATURE RANGE	BOX	BOX DIMENSIONS (mm)	WEIGHT (kg)
RNF 1 Rounded Frame Black	560333352621	-30/+40° C	200	480x290x230	13
RNF 2 Rectangular Frame Black	570333352621	-30/+40° C	200	480x290x230	13
RNF 1 Rounded Frame White	560133352621	-30/+40° C	200	480x290x230	13
RNF 2 Rectangular Frame White	570133352621	-30/+40° C	200	480x290x230	13
RN 1 Rounded Frame Black	210233319502	0/120° C	200	480x290x230	13
RN 2 Rectangular Frame Black	212733319502	0/120° C	200	480x290x230	13
RN 1 Rounded Frame White	210133319502	0/120° C	200	480x290x230	13
RN 2 Rectangular Frame White	212633319502	0/120° C	200	480x290x230	13



### RNOCA

Horizontal version, available also vertical.

Case 62x11x45 mm

MODEL	CODE	TEMPERATURE RANGE	BOX	BOX DIMENSIONS (mm)	WEIGHT (kg)
RNOCA-1 Rounded Frame White	530233340123	-40/+40° C	250	480x290x230	15,5
RNOCA-1 Rounded Frame Black	530133340123	-40/+40° C	250	480x290x230	15,5
RNOCA-1 Rounded Frame Black	530133361102	0/120° C	250	480x290x230	15,5



### QP 03

Square case 48x48 mm

MODEL	CODE	TEMPERATURE RANGE	BOX	BOX DIMENSIONS (mm)	WEIGHT (kg)
QPF 03 <sup>1</sup>	614033340402	-40/+40° C	250	660x400x250	14
QP 03	443033319902	0/120° C	250	660x400x250	14
QP 03 C	443035638002	50/350° C	250	660x400x250	14



<sup>1</sup> According to norm UNI EN 13485 "Thermometers for measuring the air and product temperature for the transport, storage and distribution of chilled, frozen, deep-frozen/quick frozen food and ice cream". Arthermo thermometers are manufactured with accuracy class 2 ( $\pm 2^\circ\text{C}$ ) and resolution  $1^\circ\text{C}$ .



### CP 05

#### Case diameter 52 mm

MODEL	CODE	TEMPERATURE RANGE	BOX	BOX DIMENSIONS (mm)	WEIGHT (kg)
CPF 05 <sup>1</sup>	270133340402	-40/+40° C	100	480x290x230	6
CP 05	350133319602	0/120° C	100	480x290x230	6
CP 05 C	350135660202	50/350° C	100	480x290x230	6



### CP 05 METALLIZED FRAME

#### Case diameter 52 mm

MODEL	CODE	TEMPERATURE RANGE	BOX	BOX DIMENSIONS (mm)	WEIGHT (kg)
CPF 05-M <sup>1</sup>	270333340402	-40/+40° C	100	480x290x230	6
CP 05-M	350233319602	0/120° C	100	480x290x230	6
CP 05 C-M	350235660202	50/350° C	100	480x290x230	6



### CP 03

#### Case diameter 52 mm

MODEL	CODE	TEMPERATURE RANGE	BOX	BOX DIMENSIONS (mm)	WEIGHT (kg)
CPF 03 <sup>1</sup>	870133340102	-40/+40° C	250	660x400x250	14
CP 03	990133320102	0/120° C	250	660x400x250	14
CP 03 C	990135629002	50/350° C	250	660x400x250	14,5



### CP 37

#### Case diameter 37 mm

MODEL	CODE	TEMPERATURE RANGE	BOX	BOX DIMENSIONS (mm)	WEIGHT (kg)
CPF 37 <sup>1</sup>	980133340102	-40/+40° C	250	660x400x250	12
CP 37	980133319502	0/120° C	100	480x290x230	5

### C 71

Fixing brackets included, zinc plated steel case.

#### Diameter 52 mm

MODEL	CODE	TEMPERATURE RANGE	BOX	BOX DIMENSIONS (mm)	WEIGHT (kg)
CF 72 <sup>1</sup>	160133338802	-40/+40° C	100	660x400x250	16
C 71	130133328902	0/120° C	100	660x400x250	16
C 71 C	135035676002	50/350° C	100	660x400x250	16

#### Diameter 60 mm

MODEL	CODE	TEMPERATURE RANGE	BOX	BOX DIMENSIONS (mm)	WEIGHT (kg)
CF 72 <sup>1</sup>	170133338802	-40/+40° C	100	660x400x250	16
C 71	140133329002	0/120° C	100	660x400x250	16
C 71 C	145435675902	50/350° C	100	660x400x250	16

#### Diameter 60 mm LIGHT

MODEL	CODE	TEMPERATURE RANGE	BOX	BOX DIMENSIONS (mm)	WEIGHT (kg)
C 71 LIGHT		0/120° C	100	660x400x250	17
C 71 LIGHT		50/350° C	100	660x400x250	17



#### Diameter 80 mm

MODEL	CODE	TEMPERATURE RANGE	BOX	BOX DIMENSIONS (mm)	WEIGHT (kg)
CF 72 <sup>1</sup>	180233338902	-40/+40° C	50	660x400x250	16
C 71	150133328902	0/120° C	50	660x400x250	16
C 71 C	155135676002	50/350° C	50	660x400x250	17



<sup>1</sup> According to norm UNI EN 13485 "Thermometers for measuring the air and product temperature for the transport, storage and distribution of chilled, frozen, deep-frozen/quick frozen food and ice cream". Arthermo thermometers are manufactured with accuracy class 2 ( $\pm 2^\circ\text{C}$ ) and resolution  $1^\circ\text{C}$ .



### F 84 FA EC

Version with zinc plated steel case, available only with stainless steel front flange.

#### Diameter 52 mm

MODEL	CODE	TEMPERATURE RANGE	BOX	BOX DIMENSIONS (mm)	WEIGHT (kg)
F 84 EC <sup>1</sup>	190133340402	-40/+40° C	150	660x400x250	18
F 84 EC	190133319502	0/120° C	150	660x400x250	18
F 84 EC	190234665002	50/350° C	150	660x400x250	20

### F 84 FA

Stainless steel front flange, resin hardened case. Individual packaging

#### Diameter 60 mm

MODEL	CODE	TEMPERATURE RANGE	BOX	BOX DIMENSIONS (mm)	WEIGHT (kg)
F 84 FA <sup>1</sup>	220133040311	-40/+40° C	50	660x400x250	11
F 84 FA	220133019502	0/120° C	50	660x400x250	11
F 84 FA	220134663102	50/350° C	50	660x400x250	11

#### Diameter 80 mm

MODEL	CODE	TEMPERATURE RANGE	BOX	BOX DIMENSIONS (mm)	WEIGHT (kg)
F 84 FA <sup>1</sup>	230133040311	-40/+40° C	30	660x400x250	10
F 84 FA	230133019502	0/120° C	30	660x400x250	10
F 84 FA	230134663102	50/350° C	30	660x400x250	10

#### Diameter 100 mm

MODEL	CODE	TEMPERATURE RANGE	BOX	BOX DIMENSIONS (mm)	WEIGHT (kg)
F 84 FA <sup>1</sup>	240133040211	-40/+40° C	30	660x400x250	12
F 84 FA	240133019502	0/120° C	30	660x400x250	12
F 84 FA	240134665002	50/350° C	30	660x400x250	12

### F 84 FP

Stainless steel frame, resin hardened back flange. Individual packaging

#### Diameter 60 mm

MODEL	CODE	TEMPERATURE RANGE	BOX	BOX DIMENSIONS (mm)	WEIGHT (kg)
F 84 FP <sup>1</sup>	290133040111	-40/+40° C	50	660x400x250	12
F 84 FP	290133019602	0/120° C	50	660x400x250	12
F 84 FP	290134660102	50/350° C	50	660x400x250	12

#### Diameter 80 mm

MODEL	CODE	TEMPERATURE RANGE	BOX	BOX DIMENSIONS (mm)	WEIGHT (kg)
F 84 FP <sup>1</sup>	300133040411	-40/+40° C	30	660x400x250	11
F 84 FP	300133019802	0/120° C	30	660x400x250	11
F 84 FP	300134660102	50/350° C	30	660x400x250	11

#### Diameter 100 mm

MODEL	CODE	TEMPERATURE RANGE	BOX	BOX DIMENSIONS (mm)	WEIGHT (kg)
F 84 FP <sup>1</sup>	310133040211	-40/+40° C	30	660x400x250	13
F 84 FP	310133019802	0/120° C	30	660x400x250	13
F 84 FP	310134666902	50/350° C	30	660x400x250	13

### F 87 R

Case and reversible flange in ABS. Front flange standard, back flange available on request. **WITH COMPENSATION.** Individual packaging

#### Diameter 60 mm

MODEL	CODE	TEMPERATURE RANGE	BOX	BOX DIMENSIONS (mm)	WEIGHT (kg)
F 87 RF <sup>1</sup>	910133040111	-40/+40° C	150	670x430x550	22
F 87 R	910133019502	0/120° C	150	670x430x550	22
F 87 RC	910134667002	50/350° C	150	670x430x550	22

#### Diameter 80 mm

MODEL	CODE	TEMPERATURE RANGE	BOX	BOX DIMENSIONS (mm)	WEIGHT (kg)
F 87 RF <sup>1</sup>	920133040111	-40/+40° C	80	670x430x550	16
F 87 R	920133019502	0/120° C	80	670x430x550	16
F 87 RC	920134667002	50/350° C	80	670x430x550	16

#### Diameter 100 mm

MODEL	CODE	TEMPERATURE RANGE	BOX	BOX DIMENSIONS (mm)	WEIGHT (kg)
F 87 RF <sup>1</sup>	930133040111	-40/+40° C	80	670x430x550	19
F 87 R	930133019502	0/120° C	80	670x430x550	19
F 87 RC	930134667002	50/350° C	80	670x430x550	19





**F 87 R DELUXE**

Case and reversible flange in ABS metallized. Front flange standard, back flange available on request. **WITH COMPENSATION.** Individual packaging

**Diameter 100 mm**

MODEL	CODE	TEMPERATURE RANGE	BOX	BOX DIMENSIONS (mm)	WEIGHT (kg)
F 87 R Deluxe	930333040111	-40/+40° C	80	670x430x550	19
F 87 R Deluxe	930333019502	0/+120° C	80	670x430x550	19
F 87 R Deluxe	930334667002	50/+350° C	80	670x430x550	19



**F 87 R LONG CAPILLARY**

Case and reversible flange in ABS. Front flange standard, back flange available on request. Individual packaging

**Diameter 80 mm**

MODEL	CODE	CAPILLARY LENGTH	TEMPERATURE RANGE	BOX	BOX DIMENSIONS (mm)	WEIGHT (kg)
F 87 RF	920150040111	3000mm	-40/+40° C	80	670x430x550	17,5
F 87 RF	920162040111	4500mm	-40/+40° C	80	670x430x550	20
F 87 RF	920170040111	6000mm	-40/+40° C	80	670x430x550	22
F 87 RF	920177040111	7500mm	-40/+40° C	80	670x430x550	24,5



**Diameter 100 mm**

MODEL	CODE	CAPILLARY LENGTH	TEMPERATURE RANGE	BOX	BOX DIMENSIONS (mm)	WEIGHT (kg)
F 87 RF	930150040111	3000mm	-40/+40° C	80	670x430x550	21
F 87 RF	930162040111	4500mm	-40/+40° C	80	670x430x550	23
F 87 RF	930170040111	6000mm	-40/+40° C	80	670x430x550	25,5
F 87 RF	930177040111	7500mm	-40/+40° C	80	670x430x550	28

**F 84 FA SS IP55**

Front flange. Flange and case made of stainless steel 304

**Diameter 60 mm**

MODEL	CODE	TEMPERATURE RANGE	BOX	BOX DIMENSIONS (mm)	WEIGHT (kg)
F 84 FA SS <sup>1*</sup>	222133040311	-40/+40° C	20	330x260x270	6,2
F 84 FA SS*	222133019502	0/120° C	20	330x260x270	6,2
F 84 FA SS*	222134663102	50/350° C	20	330x260x270	6,2

**Diameter 80 mm**

MODEL	CODE	TEMPERATURE RANGE	BOX	BOX DIMENSIONS (mm)	WEIGHT (kg)
F 84 FA SS <sup>1</sup>	232133040311	-40/+40° C	10	330x260x270	4,0
F 84 FA SS	232133019502	0/120° C	10	330x260x270	4,0
F 84 FA SS	232134663102	50/350° C	10	330x260x270	4,0

**Diameter 100 mm**

MODEL	CODE	TEMPERATURE RANGE	BOX	BOX DIMENSIONS (mm)	WEIGHT (kg)
F 84 FA SS <sup>1</sup>	243133040311	-40/+40° C	10	330x260x270	6,0
F 84 FA SS	243133019502	0/120° C	10	330x260x270	6,0
F 84 FA SS	243134663102	50/350° C	10	330x260x270	6,0



**F 84 FPO SS IP55**

Back flange. Flange and case made of stainless steel 304. Backside capillary exit

**Diameter 60 mm**

MODEL	CODE	TEMPERATURE RANGE	BOX	BOX DIMENSIONS (mm)	WEIGHT (kg)
F 84 FPO SS <sup>1*</sup>	292133040311	-40/+40° C	20	330x260x270	6,2
F 84 FPO SS*	292133019502	0/120° C	20	330x260x270	6,2
F 84 FPO SS*	292134663102	50/350° C	20	330x260x270	6,2

**Diameter 80 mm**

MODEL	CODE	TEMPERATURE RANGE	BOX	BOX DIMENSIONS (mm)	WEIGHT (kg)
F 84 FPO SS <sup>1</sup>	302133040311	-40/+40° C	10	330x260x270	4,0
F 84 FPO SS	302133019502	0/120° C	10	330x260x270	4,0
F 84 FPO SS	302134663102	50/350° C	10	330x260x270	4,0

**Diameter 100 mm**

MODEL	CODE	TEMPERATURE RANGE	BOX	BOX DIMENSIONS (mm)	WEIGHT (kg)
F 84 FPO SS <sup>1</sup>	313133040311	-40/+40° C	10	330x260x270	4,0
F 84 FPO SS	313133019502	0/120° C	10	330x260x270	4,0
F 84 FPO SS	313134663102	50/350° C	10	330x260x270	4,0



\* IP54

<sup>1</sup> According to norm UNI EN 13485 "Thermometers for measuring the air and product temperature for the transport, storage and distribution of chilled, frozen, deep-frozen/quick frozen food and ice cream". Arthermo thermometers are manufactured with accuracy class 2 ( $\pm 2^\circ\text{C}$ ) and resolution  $1^\circ\text{C}$ .





ARTHERMO®

# Oven Range

Section 2

## Capillary Thermometers 0-500° C / 0-600° C Ø 52 - Ø 60 - Ø 80

APPLICATIONS: Ovens, stoves, grills, barbecues, chimneys.  
 WORKING RANGE: 75% on the maximum temperature

AMBIENT MAXIMUM TEMPERATURE ON THE CASE: +80° C  
 Available also with black dial

MATERIALS	
Case	Zinc plated steel
Window	Glass
Pointer	Aluminium
Capillary/Bulb	Stainless steel mm 1000
Frame	S.S. AISI 304
Fixing	<b>C71:</b> With brackets <b>F84:</b> FA front flange

TECHNICAL SPECIFICATIONS	
Norm	EN 13190
Temperature limits	Storage: -20/+60° C
Range	0/500° C - 0/600° C
Working temperature	+50/+450° C - +50/+500° C
Accuracy class	2
Degree of protection	IP53 (on request IP63 thermometer)
Thermometric movements	By gas expansion

Mod. C71 OVEN



Mod. F84 OVEN



Mod. C71 OVEN light



Mod. C71 OVEN



Mod. F84 OVEN



### STANDARD VERSION

MODEL	CODE	Ø (mm)	Ø flange (mm)	TEMPERATURE RANGE	BOX	BOX DIMENSIONS (mm)	WEIGHT (kg)
C 71 OVEN	092023986153	52		0-500° C	100	660x400x250	16
C 71 OVEN	092523986153	60		0-500° C	100	660x400x250	16
C 71 OVEN	093023986153	80		0-500° C	60	660X400X250	18
F84 OVEN	091023986153	52		0-500° C	150	660x400x250	20
F 84 OVEN	091523986153	60	80	0-500° C	120	660x400x250	20
F 84 OVEN	091723986153	60	85	0-500° C	120	660x400x250	20

MODEL	Ø (mm)	Ø flange (mm)	TEMPERATURE RANGE	BOX	BOX DIMENSIONS (mm)	WEIGHT (kg)
C71 OVEN light	60		0-500° C	100	660x400x250	17
C71 OVEN light	60		0-600° C	100	660x400x250	17



### STANDARD VERSION

MODEL	CODE	Ø (mm)	Ø flange (mm)	TEMPERATURE RANGE	BOX	BOX DIMENSIONS (mm)	WEIGHT (kg)
C71 OVEN	092023986053	52		0-600° C	100	660x400x250	16
C71 OVEN	092523986053	60		0-600° C	100	660x400x250	16
C71 OVEN	093023986053	80		0-600° C	60	660x400x250	18
F84 OVEN	091023986053	52		0-600° C	150	660x400x250	20
F84 OVEN	091523986053	60	80	0-600° C	120	660x400x250	20
F84 OVEN	091723986053	60	85	0-600° C	120	660x400x250	20

## Timer 60 Min. Ø 60

APPLICATIONS: Ovens, stoves, grills, barbecues, chimneys.

TIMER C71 Ø 60



TIMER F84 Ø 60



### TIMER 60 MIN.

MODEL	CODE	Ø flange (mm)	BOX	BOX DIMENSIONS (mm)	WEIGHT (kg)
TIMER C71 OVEN	TIMER60/01C71		100	660x400x250	16
TIMER F84 OVEN	TIMER60/0180	80	120	660x400x250	20
TIMER F84 OVEN	TIMER60/0185	85	120	660x400x250	20

## Bimetallic Thermometers Ø 40 - Ø 50 - Ø 65

APPLICATIONS: Ovens, stoves, grills, barbecues, chimneys.

MATERIALS	
Case	Zinc plated steel
Window	Glass
Dial	Aluminium
Pointer	Aluminium
Stem	Zinc plated steel Ø 9 mm or brass
Temperature element	Bimetallic, spiralled

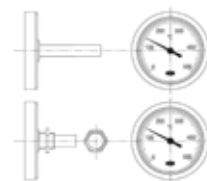
TECHNICAL SPECIFICATIONS	
Norm	EN 13190
Temperature limits	Ambient: -20/+60° C Storage: -20/+60° C
Operating temperature	As per dial indication
Accuracy class	2
Degree of protection	IP41 per EN 60 529/IEC 529



MOD. 569

A) DIRECT IMMERSION

B) G1/4" THREADED WITH NUT



TYPE	CODE	STEM (mm)	TEMPERATURE RANGE	BOX	BOX DIMENSIONS (mm)	WEIGHT (kg)
AR569-T/B 40	024207438500	20 threaded	0-500°C	350	600x400x200	11,6
AR569-T/B 40	024209138500	27	0-500°C	350	600x400x200	11,6
AR569-T/B 40	024227938500	50	0-500°C	280	600x400x200	14,2
AR569-T/B 50	030109139600	27	0-500°C	350	600x400x200	17,7
AR569-T/B 50	030127939600	50	0-500°C	280	600x400x200	15,8
AR569-T/B 50	030151739600	100	0-500°C	200	660x400x250	16,0
AR569-T/B 65	040127939100	50	0-500°C	120	600x400x200	10,8
AR569-T/B 65	040151739100	100	0-500°C	150	660x400x250	14,0
AR569-T/B 65	040165039100	150	0-500°C	120	660x400x250	12,5
AR569-T/B 65	040169639100	200	0-500°C	100	660x400x250	12,5
AR569-T/B 65	040177239100	300	0-500°C	100	660x400x250	13,5
AR569-T/B 65	040179439100	400	0-500°C	100	660x400x250	14,5

## Accessories

Clip, coop spring, gasket.:



MODEL	CODE
COOP SPRING	05034016201
CLIP SPRING	05034205PTZ
GASKET Ø40	17139252048
GASKET Ø50	17139250042
GASKET Ø65	17139250050





ARTHERMO®

# Bimetallic Thermometers

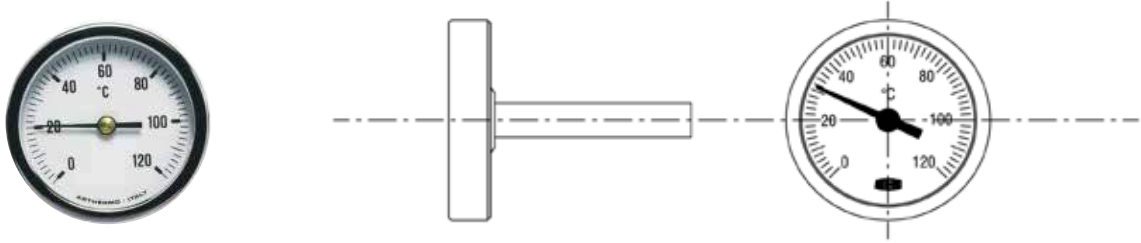
Section 3

# Bimetallic Thermometers with Zinc Plated Steel Case

APPLICATIONS: Heating, floor heating, conditioning, boilers, ovens, stoves, chimneys and electrical appliances.

## FIG. 569 Ø 32 Ø 40

Zinc plated steel case, back stem.



### MATERIALS

Case	Zinc plated steel
Window	Clear resin/glass
Dial	Aluminium
Pointer	Resin/aluminium
Stem	Zinc plated steel Ø 9 mm
Temperature element	Bimetallic, spiralled

### TECHNICAL SPECIFICATIONS

Design	UNI EN 13190
Temperature limits	Ambient: -20/+60° C Storage: -20/+60° C
Operating temperature	As per scale indication
Accuracy class	2
Degree of protection	IP41 per EN 60 529/IEC 529

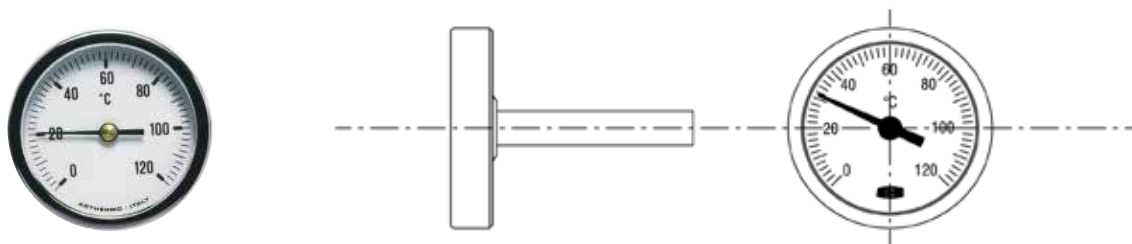
#### Diameter 32 mm

TYPE	CODE	STEM (mm)	TEMPERATURE RANGE	BOX	BOX DIMENSIONS (mm)	WEIGHT (kg)
AR-T/B 32	020109116200	27	0-80° C	350	600x400x200	11,7
AR-T/B 32	020109119700	27	0-120° C	350	600x400x200	11,7
AR-T/B 32	020109129100	27	0-200° C	350	600x400x200	11,7
AR-T/B 32		27	0-300° C	350	600x400x200	11,7
AR-T/B 32		27	0-400° C	350	600x400x200	11,7
AR-T/B 32	020127916200	50	0-80° C	280	600x400x200	12
AR-T/B 32	020127919700	50	0-120° C	280	600x400x200	12
AR-T/B 32	020127929100	50	0-200° C	280	600x400x200	12
AR-T/B 32	020127934500	50	0-300° C	280	600x400x200	12
AR-T/B 32	020127936500	50	0-400° C	280	600x400x200	12

#### Diameter 40 mm

TYPE	CODE	STEM (mm)	TEMPERATURE RANGE	BOX	BOX DIMENSIONS (mm)	WEIGHT (kg)
AR-T/B 40	024207438500	20 threaded	0-500° C	350	600x400x200	11,6
AR-T/B 40		27	0-60° C	350	600x400x200	11,6
AR-T/B 40	024209116100	27	0-80° C	350	600x400x200	11,6
AR-T/B 40	024209119800	27	0-120° C	350	600x400x200	11,6
AR-T/B 40		27	0-160° C	350	600x400x200	11,6
AR-T/B 40	024209134500	27	0-300° C	350	600x400x200	11,6
AR-T/B 40		27	0-400° C	350	600x400x200	11,6
AR-T/B 40	024209138500	27	0-500° C	350	600x400x200	11,6
AR-T/B 40		50	0-60° C	280	600x400x200	14,2
AR-T/B 40	024227916100	50	0-80° C	280	600x400x200	14,2
AR-T/B 40	024227919800	50	0-120° C	280	600x400x200	14,2
AR-T/B 40		50	0-160° C	280	600x400x200	14,2
AR-T/B 40	024227929100	50	0-300° C	280	600x400x200	14,2
AR-T/B 40		50	0-400° C	280	600x400x200	14,2
AR-T/B 40	024227938500	50	0-500° C	280	600x400x200	14,2

On request: different stem length  
On request: threaded stem + nut +23% on pricelist

**FIG. 569 Ø 50***Zinc plated steel case, back stem.***MATERIALS**

Case	Zinc plated steel
Window	Clear resin/glass
Dial	Aluminium
Pointer	Resin/aluminium
Stem	Zinc plated steel Ø 9 mm
Temperature element	Bimetallic, spiralled

**TECHNICAL SPECIFICATIONS**

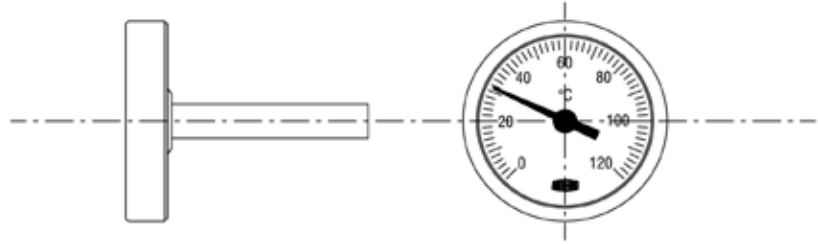
Design	UNI EN 13190
Temperature limits	Ambient: -20/+60° C Storage: -20/+60° C
Operating temperature	As per scale indication
Accuracy class	2
Degree of protection	IP41 per EN 60 529/IEC 529

**Diameter 50 mm**

TYPE	CODE	STEM (mm)	TEMPERATURE RANGE	BOX	BOX DIMENSIONS (mm)	WEIGHT (kg)
AR-T/B 50		27	0-60° C	350	600x400x200	17,7
AR-T/B 50		27	0-80° C	350	600x400x200	17,7
AR-T/B 50	030109119800	27	0-120° C	350	600x400x200	17,7
AR-T/B 50	030109124000	27	0-160° C	350	600x400x200	17,7
AR-T/B 50	030109134500	27	0-300° C	350	600x400x200	17,7
AR-T/B 50		27	0-400° C	350	600x400x200	17,7
AR-T/B 50		27	0-500° C	350	600x400x200	17,7
AR-T/B 50		50	0-60° C	280	600x400x200	15,8
AR-T/B 50		50	0-80° C	280	600x400x200	15,8
AR-T/B 50	030127919800	50	0-120° C	280	600x400x200	15,8
AR-T/B 50	030127924000	50	0-160° C	280	600x400x200	15,8
AR-T/B 50	030127934500	50	0-300° C	280	600x400x200	15,8
AR-T/B 50		50	0-400° C	280	600x400x200	15,8
AR-T/B 50		50	0-500° C	280	600x400x200	15,8
AR-T/B 50		100	0-60° C	200	660x400x250	16
AR-T/B 50	030151718000	100	0-80° C	200	660x400x250	16
AR-T/B 50	030151719800	100	0-120° C	200	660x400x250	16
AR-T/B 50	030151724000	100	0-160° C	200	660x400x250	16
AR-T/B 50	030151734500	100	0-300° C	200	660x400x250	16
AR-T/B 50	030151736400	100	0-400° C	200	660x400x250	16
AR-T/B 50	030151739600	100	0-500° C	200	660x400x250	16

On request: different stem length

On request: threaded stem + nut +23% on pricelist

**FIG. 569 Ø 65**
*Zinc plated steel case, back stem.*

**MATERIALS**

Case	Zinc plated steel
Window	Clear resin/glass
Dial	Aluminium
Pointer	Resin/aluminium
Stem	Zinc plated steel Ø 9 mm
Temperature element	Bimetallic, spiralled

**TECHNICAL SPECIFICATIONS**

Design	UNI EN 13190
Temperature limits	Ambient: -20/+60° C Storage: -20/+60° C
Operating temperature	As per scale indication
Accuracy class	2
Degree of protection	IP41 per EN 60 529/IEC 529

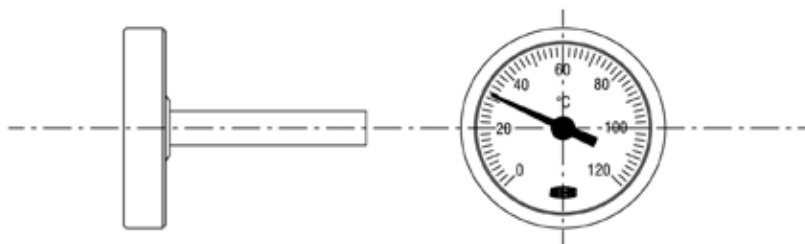
**Diameter 65 mm**

TYPE	CODE	STEM (mm)	TEMPERATURE RANGE	BOX	BOX DIMENSIONS (mm)	WEIGHT (kg)
AR-T/B 65*	040127915100	50	0-60° C	120	600x400x200	10,8
AR-T/B 65*		50	0-80° C	120	600x400x200	10,8
AR-T/B 65*	040127919900	50	0-120° C	120	600x400x200	10,8
AR-T/B 65*	040127924200	50	0-160° C	120	600x400x200	10,8
AR-T/B 65*	040127934100	50	0-300° C	120	600x400x200	10,8
AR-T/B 65*		50	0-400° C	120	600x400x200	10,8
AR-T/B 65*	040127939100	50	0-500° C	120	600x400x200	10,8
AR-T/B 65*	040151715100	100	0-60° C	150	660x400x250	14
AR-T/B 65*		100	0-80° C	150	660x400x250	14
AR-T/B 65*	040151719900	100	0-120° C	150	660x400x250	14
AR-T/B 65*	040151724200	100	0-160° C	150	660x400x250	14
AR-T/B 65*	040151734100	100	0-300° C	150	660x400x250	14
AR-T/B 65*		100	0-400° C	150	660x400x250	14
AR-T/B 65*	040151739100	100	0-500° C	150	660x400x250	14
AR-T/B 65		150	0-60° C	120	660x400x250	12,5
AR-T/B 65		150	0-80° C	120	660x400x250	12,5
AR-T/B 65	040165019900	150	0-120° C	120	660x400x250	12,5
AR-T/B 65	040165024200	150	0-160° C	120	660x400x250	12,5
AR-T/B 65	040165034100	150	0-300° C	120	660x400x250	12,5
AR-T/B 65		150	0-400° C	120	660x400x250	12,5
AR-T/B 65	040165039100	150	0-500° C	120	660x400x250	12,5
AR-T/B 65		200	0-60° C	100	660x400x250	12,5
AR-T/B 65		200	0-80° C	100	660x400x250	12,5
AR-T/B 65	040169619900	200	0-120° C	100	660x400x250	12,5
AR-T/B 65	040169624200	200	0-160° C	100	660x400x250	12,5
AR-T/B 65	040169634100	200	0-300° C	100	660x400x250	12,5
AR-T/B 65		200	0-400° C	100	660x400x250	12,5
AR-T/B 65	040169639100	200	0-500° C	100	660x400x250	12,5
AR-T/B 65		300	0-60° C	100	660x400x250	13,5
AR-T/B 65		300	0-80° C	100	660x400x250	13,5
AR-T/B 65	040177219900	300	0-120° C	100	660x400x250	13,5
AR-T/B 65	040177224200	300	0-160° C	100	660x400x250	13,5
AR-T/B 65	040177234100	300	0-300° C	100	660x400x250	13,5
AR-T/B 65		300	0-400° C	100	660x400x250	13,5
AR-T/B 65	040177239100	300	0-500° C	100	660x400x250	13,5
AR-T/B 65		400	0-400° C	100	660x400x250	14,5
AR-T/B 65	040179439100	400	0-500° C	100	660x400x250	14,5

On request: different stem length

On request: threaded stem + nut +23% on pricelist



**FIG. 569 Ø 80***Zinc plated steel case, back stem.***MATERIALS**

Case	Zinc plated steel
Window	Clear resin/glass
Dial	Aluminium
Pointer	Resin/aluminium
Stem	Zinc plated steel Ø 9 mm
Temperature element	Bimetallic, spiralled

**TECHNICAL SPECIFICATIONS**

Design	UNI EN 13190
Temperature limits	Ambient: -20/+60° C Storage: -20/+60° C
Operating temperature	As per scale indication
Accuracy class	2
Degree of protection	IP41 per EN 60 529/IEC 529

**Diameter 80 mm**

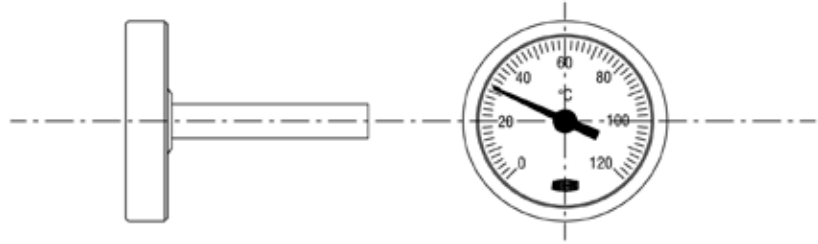
TYPE	CODE	STEM (mm)	TEMPERATURE RANGE	BOX	BOX DIMENSIONS (mm)	WEIGHT (kg)
AR-T/B 80*	050127916000	50	0-60° C	120	600x400x200	15,2
AR-T/B 80*		50	0-80° C	120	600x400x200	15,2
AR-T/B 80*	050127920000	50	0-120° C	120	600x400x200	15,2
AR-T/B 80*		50	0-160° C	120	600x400x200	15,2
AR-T/B 80*	050127935000	50	0-300° C	120	600x400x200	15,2
AR-T/B 80*		50	0-400° C	120	600x400x200	15,2
AR-T/B 80*	050127938400	50	0-500° C	120	600x400x200	15,2
AR-T/B 80*	050151716000	100	0-60° C	150	660x400x250	19,5
AR-T/B 80*		100	0-80° C	150	660x400x250	19,5
AR-T/B 80*	050151720000	100	0-120° C	150	660x400x250	19,5
AR-T/B 80*		100	0-160° C	150	660x400x250	19,5
AR-T/B 80*	050151735000	100	0-300° C	150	660x400x250	19,5
AR-T/B 80*		100	0-400° C	150	660x400x250	19,5
AR-T/B 80*	050151738400	100	0-500° C	150	660x400x250	19,5
AR-T/B 80		150	0-60° C	120	660x400x250	21
AR-T/B 80		150	0-80° C	120	660x400x250	21
AR-T/B 80	050165020000	150	0-120° C	120	660x400x250	21
AR-T/B 80		150	0-160° C	120	660x400x250	21
AR-T/B 80	050165035000	150	0-300° C	120	660x400x250	21
AR-T/B 80		150	0-400° C	120	660x400x250	21
AR-T/B 80	050165038400	150	0-500° C	120	660x400x250	21
AR-T/B 80		200	0-60° C	100	660x400x250	15
AR-T/B 80		200	0-80° C	100	660x400x250	15
AR-T/B 80	050169620000	200	0-120° C	100	660x400x250	15
AR-T/B 80		200	0-160° C	100	660x400x250	15
AR-T/B 80	050169635000	200	0-300° C	100	660x400x250	15
AR-T/B 80		200	0-400° C	100	660x400x250	15
AR-T/B 80	050169638400	200	0-500° C	100	660x400x250	15
AR-T/B 80		300	0-60° C	100	660x400x250	17
AR-T/B 80		300	0-80° C	100	660x400x250	17
AR-T/B 80	050177220000	300	0-120° C	100	660x400x250	17
AR-T/B 80		300	0-160° C	100	660x400x250	17
AR-T/B 80	050177235000	300	0-300° C	100	660x400x250	17
AR-T/B 80		300	0-400° C	100	660x400x250	17
AR-T/B 80	050177238400	300	0-500° C	100	660x400x250	17
AR-T/B 80		400	0-400° C	75	660x400x250	14,5
AR-T/B 80	050179438400	400	0-500° C	75	660x400x250	14,5

On request: different stem length

On request: threaded stem + nut +23% on pricelist

**FIG. 569 Ø 100**

Zinc plated steel case, back stem.



**MATERIALS**

Case	Zinc plated steel
Window	Clear resin/glass
Dial	Aluminium
Pointer	Resin/aluminium
Stem	Zinc plated steel Ø 9 mm
Temperature element	Bimetallic, spiralled

**TECHNICAL SPECIFICATIONS**

Design	UNI EN 13190
Temperature limits	Ambient: -20/+60° C Storage: -20/+60° C
Operating temperature	As per scale indication
Accuracy class	2
Degree of protection	IP41 per EN 60 529/IEC 529

**Diameter 100 mm**

TYPE	CODE	STEM (mm)	TEMPERATURE RANGE	BOX	BOX DIMENSIONS (mm)	WEIGHT (kg)
AR-T/B 100*	060127915000	50	0-60° C	100	660x400x250	19
AR-T/B 100*		50	0-80° C	100	660x400x250	19
AR-T/B 100*	060127919800	50	0-120° C	100	660x400x250	19
AR-T/B 100*		50	0-160° C	100	660x400x250	19
AR-T/B 100*	060127935500	50	0-300° C	100	660x400x250	19
AR-T/B 100*		50	0-400° C	100	660x400x250	19
AR-T/B 100*	060127939300	50	0-500° C	100	660x400x250	19
AR-T/B 100*	060151715000	100	0-60° C	100	660x400x250	20
AR-T/B 100*		100	0-80° C	100	660x400x250	20
AR-T/B 100*	060151719800	100	0-120° C	100	660x400x250	20
AR-T/B 100*		100	0-160° C	100	660x400x250	20
AR-T/B 100*	060151735500	100	0-300° C	100	660x400x250	20
AR-T/B 100*		100	0-400° C	100	660x400x250	20
AR-T/B 100*	060151739300	100	0-500° C	100	660x400x250	20
AR-T/B 100		150	0-60° C	80	660x400x250	17
AR-T/B 100		150	0-80° C	80	660x400x250	17
AR-T/B 100	060165019800	150	0-120° C	80	660x400x250	17
AR-T/B 100		150	0-160° C	80	660x400x250	17
AR-T/B 100	060165035500	150	0-300° C	80	660x400x250	17
AR-T/B 100		150	0-400° C	80	660x400x250	17
AR-T/B 100	060165039300	150	0-500° C	80	660x400x250	17
AR-T/B 100		200	0-60° C	80	660x400x250	18
AR-T/B 100		200	0-80° C	80	660x400x250	18
AR-T/B 100	060169619800	200	0-120° C	80	660x400x250	18
AR-T/B 100		200	0-160° C	80	660x400x250	18
AR-T/B 100	060169635500	200	0-300° C	80	660x400x250	18
AR-T/B 100		200	0-400° C	80	660x400x250	18
AR-T/B 100	060169639300	200	0-500° C	80	660x400x250	18
AR-T/B 100		300	0-60° C	50	660x400x250	13
AR-T/B 100		300	0-80° C	50	660x400x250	13
AR-T/B 100	060177219800	300	0-120° C	50	660x400x250	13
AR-T/B 100		300	0-160° C	50	660x400x250	13
AR-T/B 100	060177235500	300	0-300° C	50	660x400x250	13
AR-T/B 100		300	0-400° C	50	660x400x250	13
AR-T/B 100	060177239300	300	0-500° C	50	660x400x250	13
AR-T/B 100		400	0-400° C	50	660x400x250	13,50
AR-T/B 100	060179439300	400	0-500° C	50	660x400x250	13,50

On request: different stem length

On request: threaded stem + nut +23% on pricelist

## Bimetallic Thermometers with Resin Case

APPLICATIONS: Heating, floor heating, pumping groups in solar systems, boilers.

### FIG. 569 Ø 40 Ø 50

Resin without frame/with frame.



TYPE	MODEL	CODE	DIAMETER	STEM (mm)	TEMPERATURE	BOX	BOX DIMENSIONS	WEIGHT (kg)
AR-T/B. RES 40	without frame	023200014800	Ø 40	27	0-60° C	350	600x400x200	6
AR-T/B. RES 40	without frame	023200016100	Ø 40	27	0-80° C	350	600x400x200	6
AR-T/B. RES 40	without frame	023200019800	Ø 40	27	0-120° C	350	600x400x200	6
AR-T/B. RES 40	without frame	023100014800	Ø 40	50	0-60° C	280	600x400x200	5
AR-T/B. RES 40	without frame	023100016100	Ø 40	50	0-80° C	280	600x400x200	5
AR-T/B. RES 40	without frame	023100019800	Ø 40	50	0-120° C	280	600x400x200	5
AR-T/B. RES 50	without frame	033008519800	Ø 50	25	0-120° C	350	600x400x200	6
AR-T/B. RES 50	without frame	033108524000	Ø 50	25	0-160° C	350	600x400x200	6
AR-T/B. RES 50	without frame	033027919800	Ø 50	50	0-120° C	280	600x400x200	5
AR-T/B. RES 50	without frame	033127924000	Ø 50	50	0-160° C	280	600x400x200	5
AR-T/B. RES 40	with frame	022900014800	Ø 40	27	0-60° C	350	600x400x200	6,5
AR-T/B. RES 40	with frame	022900016100	Ø 40	27	0-80° C	350	600x400x200	6,5
AR-T/B. RES 40	with frame	022900019800	Ø 40	27	0-120° C	350	600x400x200	6,5
AR-T/B. RES 40	with frame	023000014800	Ø 40	50	0-60° C	280	600x400x200	5,5
AR-T/B. RES 40	with frame	023000016100	Ø 40	50	0-80° C	280	600x400x200	5,5
AR-T/B. RES 40	with frame	023000019800	Ø 40	50	0-120° C	280	600x400x200	5,5
AR-T/B. RES 50	with frame	032908519800	Ø 50	25	0-120° C	350	600x400x200	6,5
AR-T/B. RES 50	with frame	033208524000	Ø 50	25	0-160° C	350	600x400x200	6,5
AR-T/B. RES 50	with frame	032927919800	Ø 50	50	0-120° C	280	600x400x200	5,5
AR-T/B. RES 50	with frame	033227924000	Ø 50	50	0-160° C	280	600x400x200	5,5

## Accessories for Bimetallic Thermometers

### POCKET FOR THERMOMETERS

MODEL	CODE	CONNECTION	LENGTH (mm)
BRASS POCKET WITH CLIP SPRING	903733000803	G 3/8 B	30
BRASS POCKET WITH COOP SPRING	903633000801	G 1/2 B	57
COPPER POCKET WITH COOP SPRING	903633000501	G 1/2 B	100
BRASS POCKET WITH SCREW	903633000813V	G 1/2 B	50
BRASS POCKET WITH SCREW	903633000815V	G 1/2 B	100
COPPER POCKET WITH SCREW	003633000541V	G 1/2 B	150
COPPER POCKET WITH SCREW	003633000542V	G 1/2 B	200

### CLIPS AND COOPS SPRINGS, GASKETS

MODEL	CODE
COOP SPRING	05034016201
CLIP SPRING	05034205PTZ
GASKET Ø40	17139252048
GASKET Ø50	17139250042
GASKET Ø65	17139250050



## Bimetallic Thermometers for Surface Mounting on Pipes



### FIXING WITH SPRING

TYPE	CODE	DIAMETER	CASE MATERIAL	TEMPERATURE RANGE	BOX	BOX DIMENSIONS (mm)	WEIGHT (kg)
AR-TUB 63	084800019800	Ø 63	Zinc plated steel	0-120° C	300	300x500x250	18
AR-TUB. RES 63	085000019800	Ø 63	Resin	0-120° C	300	300x500x250	10,5

## Bimetallic Thermometers for Refrigeration Field

APPLICATIONS:

Cooled display windows.



### FIG. 540 PIL

*Bimetallic table thermometer for cooled display windows.*

MODEL	CODE	FASTENER	CASE MATERIAL	TEMPERATURE RANGE	BOX	BOX DIMENSIONS (mm)	WEIGHT (kg)
540 PIL	100100040500	Hook or on top	Stainless steel Aisi 430	-40/+40° C	250	650x380x240	7



### FIG. 569 A Ø 50

*Bimetallic industrial thermometer suitable for reading the temperature of cooled display windows.*

MODEL	CODE	FASTENER	CASE MATERIAL	TEMPERATURE RANGE	BOX	BOX DIMENSIONS (mm)	WEIGHT (kg)
569 A	030500053000	Thread screw 3/8" and nut	Stainless steel Aisi 304	-35/+35° C	150	500x300x260	10



### FIG. 519 B

*Bimetallic hook thermometer for cooled display windows.*

MODEL	CODE	FASTENER	CASE MATERIAL	TEMPERATURE RANGE	BOX	BOX DIMENSIONS (mm)	WEIGHT (kg)
519 B	812600040200	With hook	White plastic	-40/+40° C	500	650x380x240	10

## Thermometer for Freezers

DESCRIPTION:

Rectangular thermometer for freezers. Temperature range -40° +40° C. Available Fahrenheit version.



### ARTHERMO FREEZER

MODEL	CODE	BOX	BOX DIMENSIONS (mm)	WEIGHT (kg)
ARTHERMO FREEZER*	701200040000	500	375X360X360	15

\* Products normally available in stock



ARTHERMO®



# Thermostats

Section 4

# Boxed Thermostats "Arthermostat Line"

APPLICATIONS: Suitable for automatic adjustment of appliances in cooling and heating field.

## ARTH093 - ARTH096 - ARTH097

Boxed adjustable thermostats, single pole, liquid filled sensing bulbs, SPDT contacts.



### TECHNICAL SPECIFICATIONS

Switching capacity	<b>ARTH093:</b> C-1 2,5(0,6)A 400 VAC / C-2 15(3)A 400VAC <b>ARTH096 - ARTH097:</b> C-1 15(3)A 400 VAC / C-2 2,5(06)A 400VAC
Life of product	100000 switching cycles
Minimum current	200 mA without gold contact
Insulation resistant	> 100 Mohm
Max temp. around body	T 110° C
Max temp. around bulb	+15% switching value
Dielectric strength	AC 2000 V 1 min
Connection	Faston 6,3x0,8
European approvals	Thermostat inside ENEC 03
Degree of protection	IP40

CODE	CAPILLARY	TEMPERATURE RANGE	BOX SP	BOX DIMENSIONS (mm)	WEIGHT (kg)
ARTH093*	1500 mm	-35/+35° C	96	600x400x270	18
ARTH096*	1500 mm	0/40° C	96	600x400x270	18
ARTH097*	1500 mm	0/90° C	96	600x400x270	18

## ARTH094 - ARTH095

Boxed adjustable thermostats, single pole, liquid filled sensing bulbs, SPDT contacts.



### TECHNICAL SPECIFICATIONS

Switching capacity	C-1 15(3)A 400 VAC / C-2 2,5(06)A 400VAC
Life of product	100000 switching cycles
Minimum current	200 mA without gold contact
Insulation resistant	> 100 Mohm
Max temp. around body	T 110° C
Max temp. around bulb	+15% switching value
Dielectric strength	AC 2000 V 1 min
Connection	Faston 6,3x0,8
European approvals	Thermostat inside ENEC 03
Degree of protection	IP40

CODE	CAPILLARY	TEMPERATURE RANGE	BOX SP	BOX DIMENSIONS (mm)	WEIGHT (kg)
ARTH094*	-	-35/+35° C	50	600x400x170	9
ARTH095*	-	0/40° C	50	600x400x170	9

## ARTH090

Boxed room temperature control , liquid filled operating, SPDT contacts.



### TECHNICAL SPECIFICATIONS

Switching capacity	C-1 15(3)A 400 VAC / C-2 2,5(0,6)A 400 VAC
Life of product	100000 switching cycles
Minimum current	200 mA without gold contact
Insulation resistant	> 100 Mohm
Max temp. Around body	T 110° C
Max temp. Around bulb	+15% switching value
Dielectric strength	AC 2000 V 1 min
Connection	Faston 6,3x0,8
European approvals	Thermostat inside ENEC 03
Degree of protection	IP40

CODE	CAPILLARY	TEMPERATURE RANGE	BOX SP	BOX DIMENSIONS (mm)	WEIGHT (kg)
ARTH090*	spiral	0/40° C	50	600x400x170	10

\* Products normally available in stock  
SP = Single packaging

## Boxed Thermostats “Arthermostat Line”

APPLICATIONS: Suitable for automatic adjustment of heating systems, burners and pumps.

### ARTH100

Immersion thermostat liquid filled operating, SPDT contacts, with waterproof protection pocket.



#### TECHNICAL SPECIFICATIONS

Switching capacity	C-1 15(3)A 400 VAC / C-2 2,5(0,6)A 400VAC
Life of product	100000 switching cycles
Minimum current	200 mA without gold contact
Insulation resistant	> 100 Mohm
Max temp. around body	T 110° C
Max temp. around bulb	+15% switching value
Dielectric strength	AC 2000 V 1 min
Connection	Faston 6,3x0,8
European approvals	Thermostat inside ENEC 03
Degree of protection	IP40

CODE	POCKET LENGTH (mm)	TEMPERATURE RANGE	BOX SP	BOX DIMENSIONS (mm)	WEIGHT (kg)
ARTH100*	100	0/90° C	42	600x400x170	10

### ARTH300

Boxed thermostats for pipes direct contact, liquid filled sensing bulb, single pole, SPDT contacts. Easy installation through heat resistant band tie.



#### TECHNICAL SPECIFICATIONS

Switching capacity	C-1 15(3)A 400 VAC / C-2 2,5(0,6)A 400VAC
Life of product	100000 switching cycles
Insulation resistant	> 100 Mohm
Max temp. around body	T 110° C
Degree of protection	IP40

CODE	CAPILLARY	TEMPERATURE RANGE	BOX SP	BOX DIMENSIONS (mm)	WEIGHT (kg)
ARTH300*	-	0/90° C	50	600x400x170	9,5

### ARTH201—ARTH202

Boxed safety manual reset thermostats for pipe direct contact through heat-resistant band tie (ARTH201) and for immersion with a 1/2" x 100mm waterproof protection pocket (ARTH202). Liquid filled operating, SPDT contacts.



#### TECHNICAL SPECIFICATIONS

Switching capacity	C-1 1A 250VAC / C-2 16A 250VAC
Life of product	6000 switching cycles
Minimum current	200 mA
Insulation resistant	> 100 Mohm
Max temp. Around body	T 150°C
Max temp. Around bulb	T 130°C
Dielectric strength	AC 2000 V 1 min
Connection	Faston 6,3x0,8
European approvals	Thermostat inside VDE
Degree of protection	IP40

CODE	CAPILLARY	SAFETY TEMPERATURE	BOX SP	BOX DIMENSIONS (mm)	WEIGHT (kg)
ARTH201*	-	100° C ± 5° C	42	600x400x170	8,0

CODE	POCKET LENGTH (mm100)	SAFETY TEMPERATURE	BOX SP	BOX DIMENSIONS (mm)	WEIGHT (kg)
ARTH202*	100	100° C ± 5° C	42	600x400x170	10

\* Products normally available in stock  
SP = Single packaging

## Boxed Thermostats "Arthermostat Line"

APPLICATIONS: Suitable for automatic adjustment of heating systems, burners and pumps.

### ARTH400

Double boxed thermostat adjustable and safety manual reset thermostat, liquid filled operating, SPDT contacts, with waterproof protection pocket.



#### TECHNICAL SPECIFICATIONS Adjustable Thermostat

Switching capacity	C-1 15(3)A 400 VAC / C-2 2,5(0,6)A 400 VAC
Life of product	100000 switching cycles
Minimum current	200 mA without gold contact
Insulation resistant	> 100 Mohm
Max temp. Around body	T 110° C
Max temp. Around bulb	+15% switching value
Dielectric strength	AC 2000 V 1 min
Connection	Faston 6,3x0,8
European approvals	Thermostat inside ENEC 03
Degree of protection	IP40

#### TECHNICAL SPECIFICATIONS Safety Thermostat

Switching capacity	C-1 1A 250VAC / C-2 16A 250VAC
Life of product	6000 switching cycles
Minimum current	200 mA
Insulation resistant	> 100 Mohm
Max temp. Around body	T 150°C
Max temp. Around bulb	T 130°C
Dielectric strength	AC 2000 V 1 min
Connection	Faston 6,3x0,8
European approvals	Thermostat inside VDE
Degree of protection	IP40

CODE	POCKET LENGTH MM	RANGE TEMPERATURE	SAFETY TEMPERATURE	BOX SP	BOX DIMENSIONS (mm)	WEIGHT (kg)
ARTH400*	100	0 / 90°C	100° C ± 5°C	24	600x400x170	11

### ARTH401

Double boxed adjustable thermostat, liquid filled operating, SPDT contacts, with waterproof protection pocket.



#### TECHNICAL SPECIFICATIONS Adjustable Thermostat N.1 and N.2

Switching capacity	C-1 15(3)A 400 VAC / C-2 2,5(0,6)A 400 VAC
Life of product	100000 switching cycles
Minimum current	200 mA without gold contact
Insulation resistant	> 100 Mohm
Max temp. Around body	T 110° C
Max temp. Around bulb	+15% switching value
Dielectric strength	AC 2000 V 1 min
Connection	Faston 6,3x0,8
European approvals	Thermostat inside ENEC 03
Degree of protection	IP40

CODE	POCKET LENGTH MM	RANGE TEMPERATURE	SAFETY TEMPERATURE	BOX SP	BOX DIMENSIONS (mm)	WEIGHT (kg)
ARTH401*	100	0 / 90°C	0 / 90°C	24	600x400x170	11

\* Products normally available in stock  
SP = Single packaging



## Classic Boxed Thermostats Line

APPLICATIONS: Suitable for automatic adjustment of appliances in cooling field.

### TSC-093C - TSC-096C - TSC-097C

Encased adjustable thermostats, single pole, liquid filled sensing bulbs, SPDT contacts.



#### TECHNICAL SPECIFICATIONS

Switching capacity	<b>TSC-096C - TSC-097C:</b> C-1 15(3)A 400 VAC / C-2 2,5(0,6)A 400VAC <b>TSC-093C:</b> C-1 2,5(0,6)A 400 VAC / C-2 15(3)A 400VAC
Life of product	100000 switching cycles
Minimum current	200 mA without gold contact
Insulation resistant	> 100 Mohm
Max temp. around body	T 110° C
Max temp. around bulb	+15% switching value
Dielectric strength	AC 2000 V 1 min
Connection	Faston 6,3x0,8
European approvals	Thermostat inside ENEC 03
Degree of protection	IP44

CODE	CAPILLARY	TEMPERATURE RANGE	BOX SP	BOX DIMENSIONS (mm)	WEIGHT (kg)
TSC-093C	1500 mm	-35/+35 ° C	96	660x400x250	18
TSC-096C	1500 mm	0/40 ° C	96	660x400x250	18
TSC-097C	1500 mm	0/90 ° C	96	660x400x250	18

### TSC-094C - TSC-095C

Encased adjustable thermostats, single pole, liquid filled sensing bulbs, SPDT contacts.



#### TECHNICAL SPECIFICATIONS

Switching capacity	C-1 15(3)A 400 VAC / C-2 2,5(0,6)A 400VAC
Life of product	100000 switching cycles
Minimum current	200 mA without gold contact
Insulation resistant	> 100 Mohm
Max temp. around body	T 110° C
Max temp. around bulb	+15% switching value
Dielectric strength	AC 2000 V 1 min
Connection	Faston 6,3x0,8
European approvals	Thermostat inside ENEC 03
Degree of protection	IP44

CODE	CAPILLARY	TEMPERATURE RANGE	BOX SP	BOX DIMENSIONS (mm)	WEIGHT (kg)
TSC-094C	-	-35/+35 ° C	50	660x400x250	9
TSC-095C	-	0/40 ° C	50	660x400x250	9

### ARTC - 100

Immersion thermostat liquid filled operating, SPDT contacts, with waterproof protection pocket.



#### TECHNICAL SPECIFICATIONS

Switching capacity	C-1 15(3)A 400 VAC / C-2 2,5(0,6)A 400VAC
Life of product	100000 switching cycles
Minimum current	200 mA without gold contact
Insulation resistant	> 100 Mohm
Max temp. around body	T 110° C
Max temp. around bulb	+15% switching value
Dielectric strength	AC 2000 V 1 min
Connection	Faston 6,3x0,8
European approvals	Thermostat inside ENEC 03
Degree of protection	IP40

CODE	POCKET LENGTH (mm)	TEMPERATURE RANGE	BOX SP	BOX DIMENSIONS (mm)	WEIGHT (kg)
ARTC - 100	100	0/90 ° C	42	600x400x170	10

\* Products normally available in stock  
SP = Single packaging

**ARTC - 300**

Boxed thermostats for pipes direct contact, liquid filled sensing bulb, single pole, SPDT contacts. Easy installation through heat resistant band tie.



**TECHNICAL SPECIFICATIONS**

Switching capacity	C-1 15(3)A 400 VAC / C-2 2,5(0,6)A 400VAC
Life of product	100000 switching cycles
Insulation resistant	> 100 Mohm
Max temp. around body	T 110° C
Degree of protection	IP40

CODE	CAPILLARY	TEMPERATURE RANGE	BOX SP	BOX DIMENSIONS (mm)	WEIGHT (kg)
ARTC - 300	-	0/90° C	50	600x400x170	9,5

**Capillary Thermostats Line**

APPLICATIONS: Automatic adjustment in refrigeration equipments and cold appliances.



**TECHNICAL SPECIFICATIONS**

Switching capacity	C-1 15(3)A 400 VAC / C-2 2,5(0,6)A 400VAC
Life of product	100000 switching cycles
Minimum current	200 mA without gold contact
Insulation resistant	> 100 Mohm
Max temp. around body	T 110° C
Max temp. around bulb	+15% switching value
Dielectric strength	AC 2000 V 1 min
Connection	Faston 6,3x0,8
European approvals	ENEC 03

CODE	CAPILLARY	TEMPERATURE RANGE	BOX	BOX DIMENSIONS (mm)	WEIGHT (kg)
C705503001B*	1500 mm stainless steel	-35+35°C	100	420x370x200	12
C702512311N*	1500 mm Copper	0/40°C	100	420x370x200	12
C700002116N	1500 mm Copper	0/60°C	100	420x370x200	12
C700502112N*	1500 mm Copper	0/90°C	100	420x370x200	12
C702003235N*	1500 mm Copper	30/120°C	100	420x370x200	12
C704253470N*	1500 mm Stainless steel	0/220°C	100	420x370x200	12
C713202530N*	1500 mm Stainless steel	50/315°C	100	420x370x200	12

\* Products normally available in stock  
 SP = Single packaging

## Boxed Thermostats "MULTI LINE"

APPLICATIONS: Suitable for automatic adjustment of heating systems, burners and pumps.

### MULTI402

Immersion adjustable thermostat with control thermometer, liquid filled operating, SPDT contacts, with waterproof protection pocket.



#### THERMOSTAT TECHNICAL SPECIFICATIONS

Switching capacity	C-1 15(3)A 400 VAC / C-2 2,5(06)A 400VAC
Life of product	100000 switching cycles
Minimum current	200 mA without gold contact
Insulation resistant	> 100 Mohm
Max temp. around body	T 110° C
Max temp. around bulb	+15% switching value
Dielectric strength	AC 2000 V 1 min
Connection	Faston 6,3x0,8
European approvals	Thermostat inside ENEC 03
Degree of protection	IP40

#### THERMOMETER TECHNICAL SPECIFICATIONS

Range	0/120°C
Dial	White dial black numbers
Resolution	2°C
Accuracy	±2°C
Pointer	Black
Frame	Black
Calibration	60°C ±1°C
Control	20 - 100°C ± 2°C
European approvals	EN 13190
Degree of protection	IP40

CODE	POCKET LENGTH MM	TEMPERATURE RANGE THERMOMETER	TEMPERATURE RANGE THERMOSTAT	BOX SP	BOX DIMENSIONS (mm)	WEIGHT (kg)
MULTI402	100	0 / 120°C	0 / 90°C	24	600x400x170	11

### MULTI403

Immersion safety manual reset thermostat with control thermometer, liquid filled operating, SPDT contacts, with waterproof protection pocket.



#### THERMOSTAT TECHNICAL SPECIFICATIONS

Switching capacity	C-1 1A 250 VAC / C-2 16A 250VAC
Life of product	6000 switching cycles
Minimum current	200 mA
Insulation resistant	> 100 Mohm
Max temp. around body	T 150° C
Max temp. around bulb	T 130° C
Dielectric strength	AC 2000 V 1 min
Connection	Faston 6,3x0,8
European approvals	Thermostat inside VDE
Degree of protection	IP40

#### THERMOMETER TECHNICAL SPECIFICATIONS

Range	0/120°C
Dial	White dial black numbers
Resolution	2°C
Accuracy	±2°C
Pointer	Black
Frame	Black
Calibration	60°C ±1°C
Control	20 - 100°C ± 2°C
European approvals	EN 13190
Degree of protection	IP40

CODE	POCKET LENGTH MM	TEMPERATURE RANGE THERMOMETER	TEMPERATURE RANGE THERMOSTAT	BOX SP	BOX DIMENSIONS (mm)	WEIGHT (kg)
MULTI403	100	0 / 120°C	100°C	24	600x400x170	11

**MULTI404**

Boxed adjustable thermostat with control thermometer



**THERMOSTAT TECHNICAL SPECIFICATIONS**

Switching capacity	C-1 2,5(0,6)A 400 VAC / C-2 15(3)A 400VAC
Life of product	100000 switching cycles
Minimum current	200 mA without gold contact
Insulation resistant	> 100 Mohm
Max temp. around body	T 110° C
Max temp. around bulb	+15% switching value
Dielectric strength	AC 2000 V 1 min
Connection	Faston 6,3x0,8
European approvals	Thermostat inside ENEC 03
Degree of protection	IP40

**THERMOMETER TECHNICAL SPECIFICATIONS**

Range	-40/+40°C
Dial	White dial black numbers
Resolution	2°C
Accuracy	±2°C
Pointer	Black
Frame	Black
Calibration	0°C ±1°C
Control	-20°C/30°C ± 2°C
European approvals	EN 13190
Degree of protection	IP40

CODE	CAPILLARY	TEMPERATURE RANGE THERMOMETER	TEMPERATURE RANGE THERMOSTAT	BOX SP	BOX DIMENSIONS (mm)	WEIGHT (kg)
MULTI404	1500mm/1500mm	-40 / +40°C	-35 / +35°C	24	600x400x170	11

**MULTI405**

Boxed adjustable thermostat with control thermometer



**THERMOSTAT TECHNICAL SPECIFICATIONS**

Switching capacity	C-1 15(3)A 400 VAC / C-2 2,5(0,6)A 400VAC
Life of product	100000 switching cycles
Minimum current	200 mA without gold contact
Insulation resistant	> 100 Mohm
Max temp. around body	T 110° C
Max temp. around bulb	+15% switching value
Dielectric strength	AC 2000 V 1 min
Connection	Faston 6,3x0,8
European approvals	Thermostat inside ENEC 03
Degree of protection	IP40

**THERMOMETER TECHNICAL SPECIFICATIONS**

Range	0/120°C
Dial	White dial black numbers
Resolution	2°C
Accuracy	±2°C
Pointer	Black
Frame	Black
Calibration	60°C ±1°C
Control	20 / 100°C ± 2°C
European approvals	EN 13190
Degree of protection	IP40

CODE	CAPILLARY	TEMPERATURE RANGE THERMOMETER	TEMPERATURE RANGE THERMOSTAT	BOX SP	BOX DIMENSIONS (mm)	WEIGHT (kg)
MULTI405	1500mm/1500mm	0 / 120°C	0 / 90°C	24	600x400x170	11

SP = Single packaging

ARTHERMO®



# Digital Instruments

Section 5

# Digital Instruments

CHARACTERISTICS: Digital thermometers with high accuracy for the refrigeration and heating fields.

## DIGITAL CONTROLLERS

Packaging: 1 box = N° 50 pcs, size 320x260x270 mm, weight 14 kg.



## TECHNICAL SPECIFICATIONS

Panel size	77x35x60 mm
Installing size	71x29 mm
Ambient temperature	10 /+60°C
Relative humidity	20% + 85%
Power supply	230 VAC ± 10%, 50/60 Hz
Power consumption	<5W
Accuracy	± 1° C

MODEL	MEASURING/REGULATION	REG. OUTPUT	DEFROSTING CYCLE	DEFROSTING Time	INPUT
CO3/30A	-45/+100°C	1SPDT,30A/250VAC			NTC PROBE 2000 mm
CO3D	-45/+100°C	2SPDT 10A/250VAC	0/24 hour / Reg	1/60 min / Reg	NTC PROBE 2000 mm
CO3DFA	-45/+150°C	3SPDT	0/24 hour / Reg	1/60 min / Reg	NTC PROBE 2000 mm
CO600	0/+600°C	1SPDT,10A/250CA			K TYPE PROBE 2000 mm

## DIGITAL THERMOMETER ROF-DIG\*

Packaging: 1 box = N° 100 pcs, size 320x260x270 mm, weight 8 kg.



## TECHNICAL SPECIFICATIONS

Panel size	64x31 mm
Installing size	58,4x25,7 mm
Temperature range	-30/+110° C
Ambient temperature	-10/+60° C
Relative humidity	20% +85%
Power supply	230 VAC ±10% 50-60Hz
Power consumption	Max 3 W
Resolution	0,1° C (<100° C) 1° C (>100° C)
Probe	NTC mm 2000

## DIGITAL THERMOMETER ROF-DIG/IP 65

Packaging: 1 box = N° 100 pcs, size 320x260x270 mm, weight 8 kg.



## TECHNICAL SPECIFICATIONS

Panel size	64x31x36 mm
Installing size	58,4x25,5 mm
Temperature range	-50/+150° C
Ambient temperature	-10/+60° C
Relative humidity	20% +85%
Power supply	230 VAC ±10% 50-60Hz
Power consumption	Max 3 W
Resolution	1° C
Probe	NTC mm 2500
IP degree	IP65

On request: adapter  
\* Products normally available in stock

**LCD BATTERY - CODE: 24W\***

Packaging: 1 box = N° 80 pcs, size 320x260x270 mm, weight 7 kg, back battery.

**TECHNICAL SPECIFICATIONS**

Case material	White plastic
Fastener	Clips
Temperature range	-40/+70° C
Feed	Lithium battery
Battery duration	About 1 year
Probe	NTC mm 3000
Resolution	0,10° C

**LCD SOLAR - CODE: SOLARCELLAR\***

Packaging: 1 box = N° 100 pcs, size 320x260x270 mm, weight 7 kg.

**TECHNICAL SPECIFICATIONS**

Temperature range	-50/+99° C
Sampling time	10 seconds
Sensor cable	1500 mm
Power	Solar panel
Environment	illumination level >60 lux, humidity 5-85%

**DIGITAL THERMOMETER PT-1\***

Packaging: 1 box = N° 100 pcs, size 650x380x240 mm, weight 6 kg.

**TECHNICAL SPECIFICATIONS**

Temperature range	-50/+300° C; -58/572° F
Resolution	0,1° C (-19,9/+199,9° C)
Probe dimension	125 mm

**DIGITAL THERMOMETER PT-2\***

Packaging: 1 box = N° 80 pcs, size 650x380x240 mm, weight 6 kg.

**TECHNICAL SPECIFICATIONS**

Temperature range	-50/+300° C; -58/572° F
Resolution	0,1° C (-19,9/+199,9° C)
Dimension	59x107x19 mm

ARTHERMO®

# Heating and Sanitary

Section 6



## Thermometers with Pocket

APPLICATIONS: Heating, floor heating, boilers and electrical appliances.

### TECHNICAL SPECIFICATIONS

Design	UNI EN 13190
Temperature limits	Ambient: -20/+60° C - Storage: -20/+60° C
Accuracy class	2
Degree of protection	IP41 per EN 60 529/IEC 529

### FIG. 569

Bimetallic, zinc plated steel case, back stem. 1/2" pocket included.

### FIG. 536

Radial thermometer with zinc plated steel or resin case. 1/2" pocket included. Working through liquid expansion.

Back stem (/B) with pocket



Radial (/Rad) with pocket



### MATERIALS (FIG. 569)

Case	Zinc plated steel
Window	Clear resin/glass
Dial	Aluminium
Pointer	Resin/aluminium
Stem	Zinc plated steel Ø 9 mm
Temperature element	Bimetallic spiral
Pocket	Brass, screw included

### MATERIALS (FIG. 536)

Case	Black zinc plated steel
Window	Clear resin/glass
Dial	Aluminium
Pointer	Aluminium
Stem	Brass Ø 6 mm
Temperature element	Liquid expansion
Pocket	Brass

TYPE	CODE	STEM (mm)	TEMPERATURE RANGE	BOX	BOX DIMENSIONS (mm)	WEIGHT (kg)
AR-T/B 50	03012791990G	50	0-120° C	120	600x400x200	10,8
AR-T/B 50	03015171990G	100	0-120° C	70	600x400x200	7,5
AR-T/B 65	04012791990G	50	0-120° C	120	600x400x200	10,8
AR-T/B 65	04015171990G	100	0-120° C	70	600x400x200	7,5
AR-T/B 80	05012792000G	50	0-120° C	120	600x400x200	15,2
AR-T/B 80	05015172000G	100	0-120° C	50	600x400x200	9
AR-T/B 100	06012791980G	50	0-120° C	60	600x400x200	12
AR-T/B 100	06015171980G	100	0-120° C	30	600x400x200	7,5
AR-T/RAD 60*	110127519502G	50	0-120° C	50	400x350x240	8,5
AR-T/RAD 60*	110151019502G	100	0-120° C	50	460x400x250	9,5
AR-T/RAD 80*	113727519502G	50	0-120° C	25	470x250x280	6,5
AR-T/RAD 80*	113751019502G	100	0-120° C	25	470x250x280	7,0
AR-T/RAD 100*	116427519502G	50	0-120° C	25	620x210x310	9
AR-T/RAD 100*	116451019502G	100	0-120° C	25	610x260x310	9,5

\*Single packaging

# Manometers

CHARACTERISTICS: Manometers with resin case, radial or back attachment, suitable in the thermosanitary sector.

## MANOMETER



## TECHNICAL SPECIFICATIONS

Case	ABS
Window	Plastic with red pointer
Attachment	Radial or back in brass
Accuracy class	1,6
Degree of protection	IP 31
Weldings	Tin alloy for temperatures from -20 to +90° C
Movement	In brass
Dial	White with black writing "ARTHERMO" branded

CODE	DIAMETER (mm)	ATTACHMENT	PRESSURE RANGE	BOX	BOX DIMENSIONS (mm)	WEIGHT (kg)
MA500/P*	50	G1/4" RADIAL	0/4 BAR	100	490X240X210	9
MA501/P*	50	G1/4" RADIAL	0/6 BAR	100	490X240X210	9
MA502/P*	50	G1/4" RADIAL	0/10 BAR	100	490X240X210	9
MA503/P*	50	G1/4" RADIAL	0/16 BAR	100	490X240X210	9
MA504/P*	50	G1/4" RADIAL	0/25 BAR	100	490X240X210	9
MA550/P*	50	G1/4" BACK	0/4 BAR	100	490X240X210	11
MA551/P*	50	G1/4" BACK	0/6 BAR	100	490X240X210	11
MA552/P*	50	G1/4" BACK	0/10 BAR	100	490X240X210	11
MA553/P*	50	G1/4" BACK	0/16 BAR	100	490X240X210	11
MA554/P*	50	G1/4" BACK	0/25 BAR	100	490X240X210	11
MA001/P*	63	G1/4" RADIAL	0/4 BAR	100	490X240X210	9,5
MA002/P*	63	G1/4" RADIAL	0/6 BAR	100	490X240X210	9,5
MA003/P*	63	G1/4" RADIAL	0/10 BAR	100	490X240X210	9,5
MA004/P*	63	G1/4" RADIAL	0/16 BAR	100	490X240X210	9,5
MA005/P*	63	G1/4" RADIAL	0/25 BAR	100	490X240X210	9,5
MA200/P*	63	G1/4" BACK	0/4 BAR	100	490X240X210	9,5
MA201/P*	63	G1/4" BACK	0/6 BAR	100	490X240X210	9,5
MA202/P*	63	G1/4" BACK	0/10 BAR	100	490X240X210	9,5
MA203/P*	63	G1/4" BACK	0/16 BAR	100	490X240X210	9,5
MA204/P*	63	G1/4" BACK	0/25 BAR	100	490X240X210	9,5
MA050/P* <sup>1</sup>	80	G3/8" RADIAL	0/4 BAR	25	490X240X210	9,5
MA051/P* <sup>1</sup>	80	G3/8" RADIAL	0/6 BAR	25	490X240X210	9,5
MA052/P* <sup>1</sup>	80	G3/8" RADIAL	0/10 BAR	25	490X240X210	9,5
MA053/P* <sup>1</sup>	80	G3/8" RADIAL	0/16 BAR	25	490X240X210	9,5
MA054/P* <sup>1</sup>	80	G3/8" RADIAL	0/25 BAR	25	490X240X210	9,5
MA100/P* <sup>1</sup>	100	G1/2" RADIAL	0/4 BAR	25	490X240X210	8,5
MA101/P* <sup>1</sup>	100	G1/2" RADIAL	0/6 BAR	25	490X240X210	8,5
MA102/P* <sup>1</sup>	100	G1/2" RADIAL	0/10 BAR	25	490X240X210	8,5
MA103/P* <sup>1</sup>	100	G1/2" RADIAL	0/16 BAR	25	490X240X210	8,5
MA104/P* <sup>1</sup>	100	G1/2" RADIAL	0/25 BAR	25	490X240X210	8,5

## CAPILLARY MANOMETER MAC-37



## TECHNICAL SPECIFICATIONS

Case	ABS
Transparent	Kostil
Range	0/4 or 0/6 bar
Pressure element	Copper alloy bourdon tube
Capillary	PVC mm 1500
Connection	Brass-thread 1/4" G
Retaining valve	Brass-thread 1/4" X 1/2" M
IP Degree	IP31
Ambient temperature	10/60° C

CODE	DIAMETER (mm)	ATTACHMENT	PRESSURE RANGE	BOX	BOX DIMENSIONS (mm)	WEIGHT (kg)
652035981300	37	G1/4"	0/4 BAR			
652035980900	37	G1/4"	0/6 BAR			

\*Single packaging

<sup>1</sup> Not available on stock, only on request

## Bimetallic thermomanometer Ø 80

APPLICATIONS: Heating, floor heating, boilers.

### THERMOMANOMETER



### TECHNICAL SPECIFICATIONS

Case	ABS
Transparent	Kostil with red pointer
Pressure element	Copper alloy Bourdon tube
Temperature element	Bimetal spiral spring
Welding	Tin alloy for working temperature from -20 +90°C
Connection	Brass-thread 1/4"G
Retaining valve	Brass-thread 1/4"F x 1/2"M
Amplifying movement	Brass for precision clockwork
Protection	IP31

CODE	TEMPERATURE RANGE	PRESSURE RANGE	CONNECTION	VALVE	BOX	BOX DIMENSIONS (mm)	WEIGHT (kg)
TI003*	0/120° C	0/4 BAR	BACK	1/4 x 1/2	50	480X245X350	9,5
TI004*	0/120° C	0/6 BAR	BACK	1/4 x 1/2	50	480X245X350	9,5
TI110*	0/120° C	0/4 BAR	RADIAL	1/4 x 1/2	50	480X245X350	9,5
TI120*	0/120° C	0/6 BAR	RADIAL	1/4 x 1/2	50	480X245X350	9,5

### CAPILLARY THERMOMANOMETER



### TECHNICAL SPECIFICATIONS

Case	ABS
Transparent	Kostil with red pointer adjustable
Pressure range	0/4 or 0/6 bar
Temperature range	0/120°C
Pressure element	Copper alloy Bourdon tube
Pressure capillary	PVC mm 1500
Temperature element	CuSn8 bourdon tube
Temperature capillary	PVC mm 1500
Connection	Brass-thread 1/4"G
Retaining valve	Brass-thread 1/4"F x 1/2"M
IP Degree	IP31
Ambient temperature	10/60°C

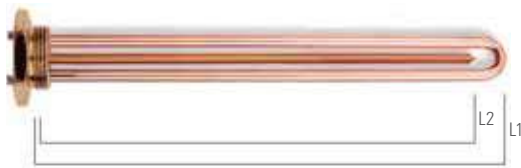
CODE	DIAMETER	ATTACHMENT	BAR RANGE/°C RANGE	BOX	BOX DIMENSIONS (mm)	WEIGHT (kg)
TI-04	52	G 1/4"F x 1/2"M	0/4 BAR - 0/120°C	100	660X400X250	15
TI-06	52	G 1/4"F x 1/2"M	0/6 BAR - 0/120°C	100	660X400X250	15

\*Single packaging

# Heating Elements

## CHARACTERISTICS RT

Heating element in Ø8 CU tube  
 1"1/4 gas brass cap  
 Sealing with epoxy resins  
 Repressed bend for a more homogeneous magnesium oxide density  
 Standard: 230V



## RT SERIES

CODE RT	POWER	L1	L2
RT011A	1200 W	300mm	280 mm
RT012A	1500 W	300mm	280 mm
RT013A-400	2000 W	400mm	280 mm



## RT - BENT SERIES

CODE RT	POWER	L1	L2	L3
RT140A	1200 W	280 mm	170 mm	135 mm
RT145A	1500 W	280 mm	170 mm	135 mm
RT150A-400	2000 W	280 mm	220 mm	180 mm

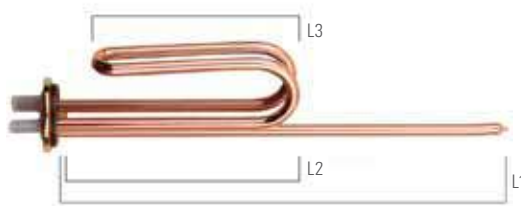
## CHARACTERISTICS RF

Heating element in Ø8 CU tube  
 Ø 48 brass flange  
 Sealing with epoxy resins  
 Repressed bend for a more homogeneous magnesium oxide density  
 Standard: 230V



## RF SERIES

CODE RF	POWER	L1	L2
RF011A	1200 W	300 mm	280 mm
RF012A	1500 W	300 mm	280 mm
RF013A	2000 W	400 mm	280 mm
RF014A high faston	1200 W	300 mm	280 mm



## RF - BENT SERIES

CODE RF	POWER	L1	L2	L3
RF111A	1200 W	280 mm	175 mm	135 mm
RF112A	1500 W	280 mm	175 mm	135 mm
RF113A-400	2000 W	280 mm	215 mm	185 mm
RF116A high faston	1200 W	280 mm	175 mm	135 mm

Special versions of heating elements are available on request.  
 Minimum quantity: 1000 Pcs.

## Adjustable Thermostats

### TS 030



#### CHARACTERISTICS

Temperature range	20 - 80° C
Electric rating	20A - 250V
Sensing element	Rigid stem
Standard stem	275 mm

### TS 150

*With bipolar safety.*



#### CHARACTERISTICS

Temperature range	20 - 80° C
Bipolar safety calibration	90° C
Electric rating	20A - 250V
Sensing element	Rigid stem
Standard stem	275 mm

## Resistor Gaskets

GF 100	RF gasket
GT 002	O ring

## Neon Signals



### LA 200

## Safety Valves

STANDARD REGULATION: 8 bar (other regulations on request).



### VA 090

*1/2" MF.*



### VA 130

*1/2" MF with lever.*

# Thermometers

CHARACTERISTICS: Bimetallic industrial thermometer, designed for reading the temperature of electric boilers.

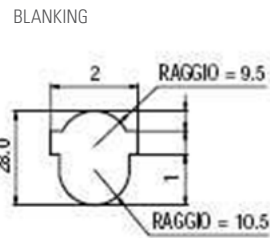
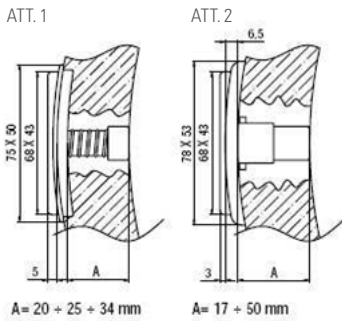
**FIG. 599**



599.1 blue



599.1 red



**FIG. 600**



600.1 blue



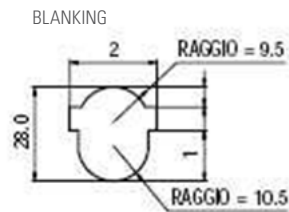
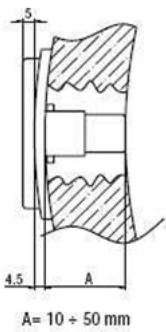
600.4 grey



600.2 red



600.5 white



600.3 black



On request: customized dial minimum quantity: 5000 Pcs.

# Safety now Enecc certified



**IMQ S.p.A.** - Società con Socio Unico  
I-20138 Milano - via Quintiliano, 43  
tel. 0250731 (r.a.) - fax 0250991500  
e-mail: info@imq.it - www.imq.it

Rea Milano 1595884  
Registro Imprese Milano 12898410159  
C.F./P.I. 12898410159  
Capitale Sociale € 4.000.000

**CA02.06031**

SN.Q000NI

*PID:*

02512300

*CID:*

C.1993.1225

## Certificato di approvazione *Approval certificate*



SGQ N° 005 A	EMAS N° 003 P
SGA N° 006 D	PRD N° 005 B
SGE N° 006 M	PRS N° 080 C
SCR N° 005 F	ISP N° 063 E
SSI N° 003 G	LAB N° 0121
FSM N° 007 I	LAT N° 021

Membro degli Accordi di Mutuo Riconoscimento  
EA, IAF e ILAC

Signatory of EA, IAF and ILAC  
Mutual Recognition Agreements

**IMQ, ente di certificazione accreditato, autorizza la ditta**     *IMQ, accredited certification body, grants to*

**ARTHERMO SRL  
VIA ITALIA 32  
20060 GESSATE MI  
IT - Italy**

**all'uso del marchio**

*the licence to use the mark*

**ENEC 03,IMQ**



**Il presente certificato è stato rilasciato sotto la presunzione e subordinatamente al fatto che il concessionario detenga tutti i necessari diritti legali relativi ai prodotti presentati per le prove e la certificazione, descritti nell'Allegato al presente certificato; inoltre, esso è soggetto alle condizioni previste nel Regolamento "MARCHI IMQ - Regolamento per la certificazione di prodotti".**

**La validità dei certificati ENEC è verificabile sul sito [www.enec.com](http://www.enec.com)**

*This certificate has been issued under the presumption and conditional on the fact that the licensee holds all necessary legal rights with regard to the products presented for testing and certification, and listed in the annex to this certificate; moreover, it is subjected to the conditions foreseen by Rules "IMQ MARKS - RULES for product certification".*

*Validity of ENEC licences can be checked at [www.enec.com](http://www.enec.com)*

**per i seguenti prodotti**

**Dispositivi di comando sensibili  
alla temperatura  
( Serie ARATHERMOSTAT )**

*for the following products*

*Temperature sensing controls  
( Series ARATHERMOSTAT )*

Emesso il | Issued on     **2016-09-22**

Aggiornato il | Updated on     ---

Sostituisce | Replaces     ---

IMQ S.p.A.

# ARTHERMO®

ARTHERMO Srl  
Via Italia 32  
20060 Gessate (Mi) Italy  
Tel. +39 02 95781144  
Fax +39 02 95382362  
[info@arthermo.com](mailto:info@arthermo.com)  
[www.arthermo.com](http://www.arthermo.com)

The data and the characteristics indicated in this catalogue are not binding.  
Arthermo reserves the right to make changes in above specifications without obligation of notice.